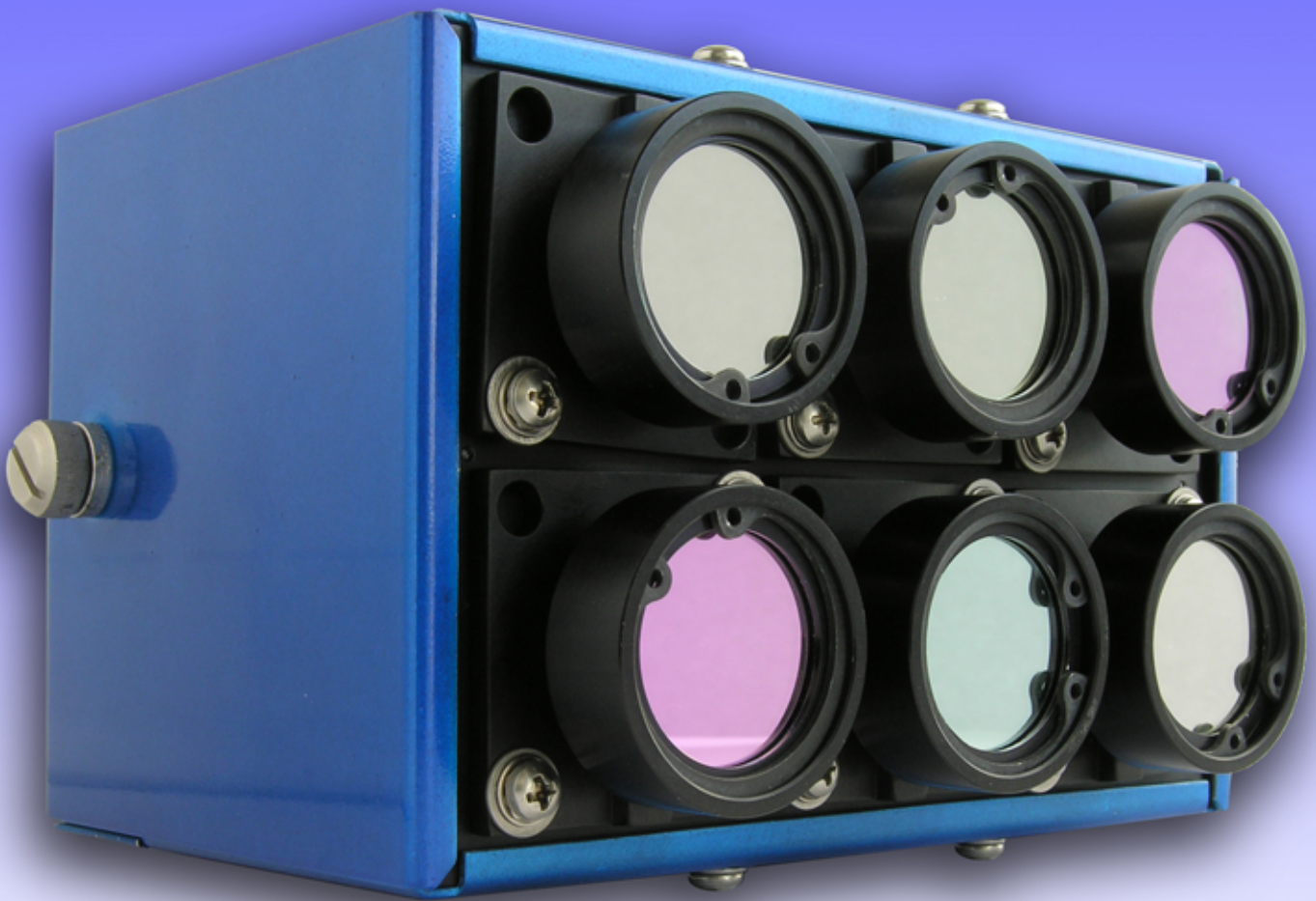


# MCA Series

The New *Mini* MCA (Multi Channel Camera)



***Mini* MCA 6**

Available in versions of up to 6 channels  
The newly re-engineered MCA is ready for any assignment  
with unprecedented image quality, flexibility and control

**High Quality Multi-Spectral Imaging**

# Mini MCA

1.3 Megapixels (Per Channel)  
image size for excellent  
ground resolution.

Video out and standard  
GPS data capture from  
an external receiver.

modular system allows  
syncing of multiple Mini MCA  
units to achieve 12,18 and  
even 24 channels at once

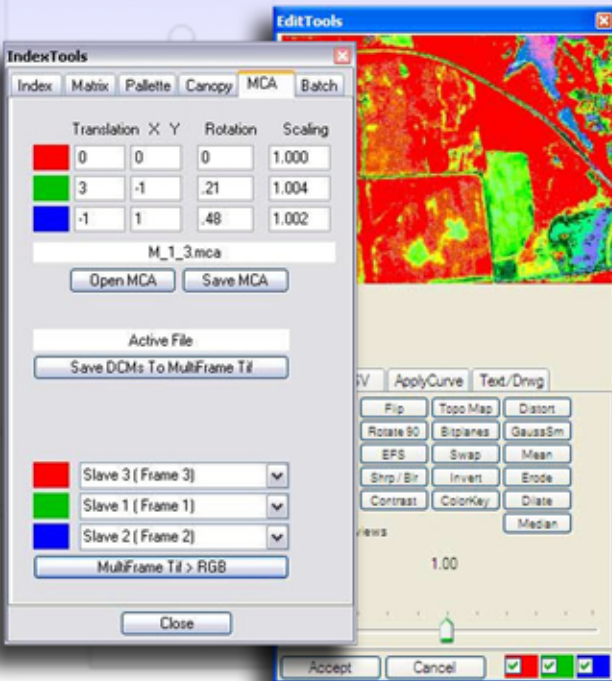
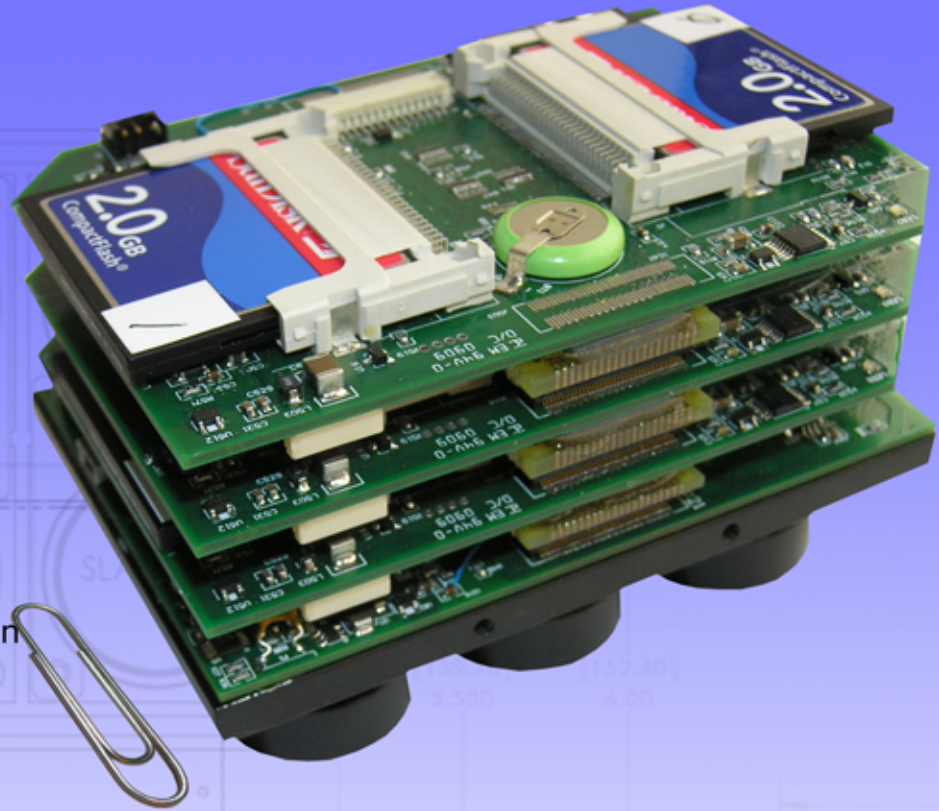
User interchangeable  
filters

Weighs only 1.6 lbs with  
lenses

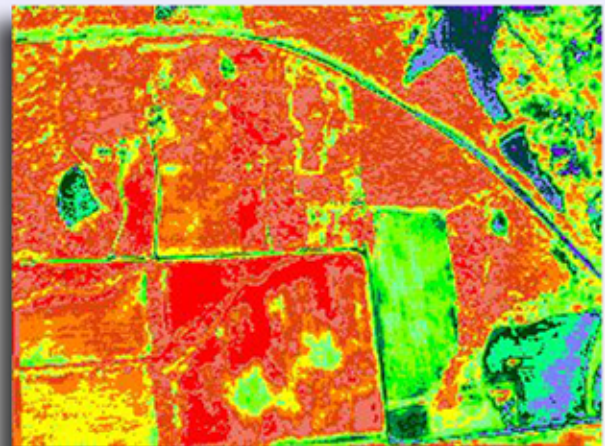
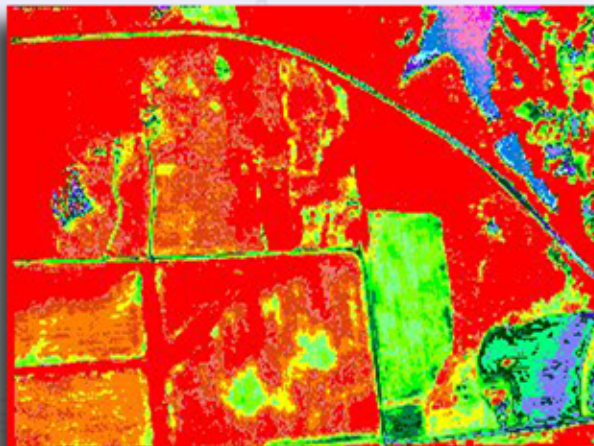
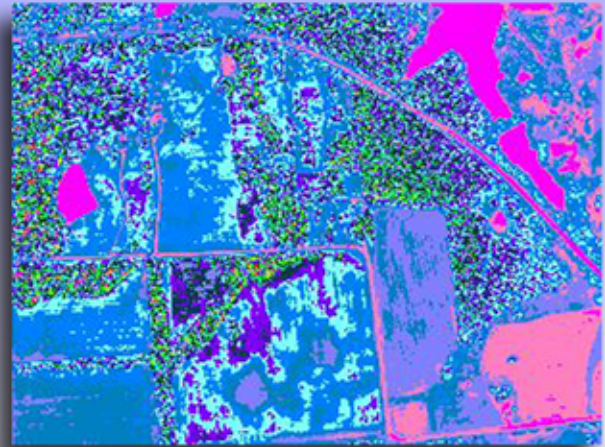
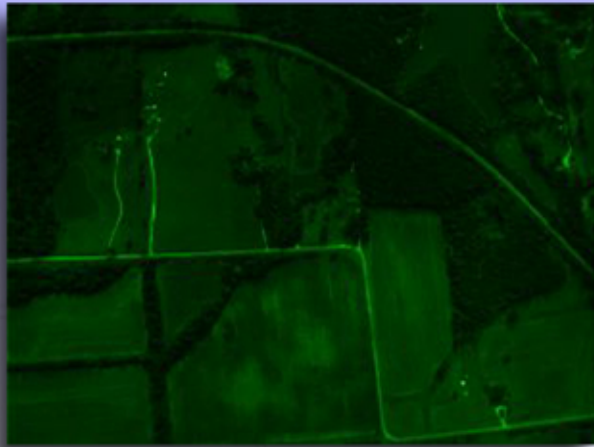
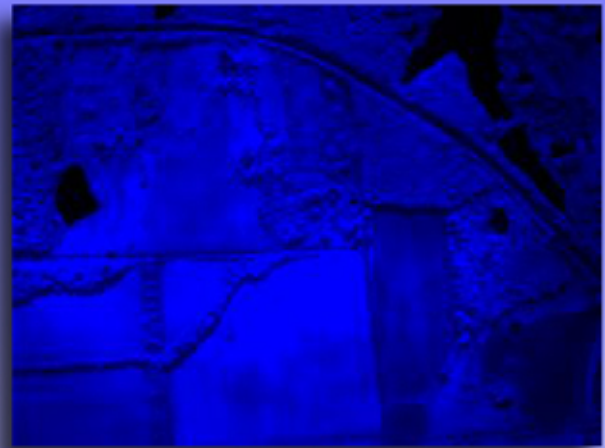
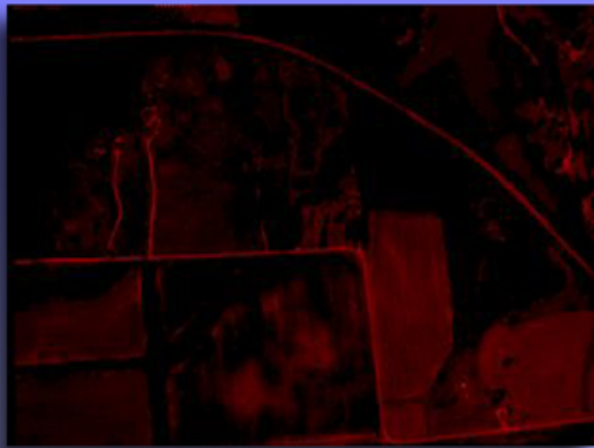
Optional SensorLink application  
enables camera triggering  
at pre-defined GPS waypoints.

Uses standard Compact  
Flash memory cards

Powerful PixelWrench2  
image editing software with  
several tools specific to  
multi-spectral images  
and MCA cameras.



The Mini MCA is ideal for critical narrow band digital photography on the ground or in the air.



Multi-spectral images captured with various filters.

# Mini MCA

## Specifications

SXGA (1280 x 1024) 1.3 megapixel CMOS sensor, 1 per channel.  
25mm standard spectrometer filters, 6 channels  
9.6mm lenses, 1 per channel  
Image storage to Compact Flash in Tetracam DCM, 8bit and 10bit RAW formats.  
USB interface  
Multipin I/O connector for use with Tetracam remote trigger and viewer accessories.  
Lightweight aluminum enclosure

## Image Capture

Capacity: Approx. 1MB per image/channel, limited only by CF card size.  
Rate: Single Shot - Capture to end of compression and write: 3-5 seconds.  
Burst Mode - 1.3 frames per second until buffer full.

## Inputs

12 VDC @ 1A  
RS-232 dedicated to capture of NMEA GPS sentences.  
External Trigger

## Outputs

Realtime NTSC or PAL Video for both viewfinder and menu operations

## Data Interface

USB 1.1

## Dimensions (Mini MCA6)

(131.4 mm x 78.3 mm x 87.6 mm) with lenses  
Weight 1.6 lb. (700g) (6 channel configuration)

## System Includes

Mini MCA Camera, 1 filter and 9.6mm lens per channel  
512MB CF cards (1 per channel)  
USB Cable  
Remote Trigger unit  
AC/DC power supply  
DC power cable  
Teflon Calibration tag  
Tetracam PixelWrench2 Application Software (for Windows)  
Rugged carrying case

Available for order Now.

**Contact your Tetracam Reseller for additional information and pricing or contact Tetracam direct at [info@tetracam.com](mailto:info@tetracam.com).**



21601 Devonshire St. Suite 310 Chatsworth Ca. USA 91311  
Phone-818-288-4489 Fax-818-718-7103  
[www.tetracam.com](http://www.tetracam.com)